

# POWERBALL<sup>®</sup>

## TORCH PRODUCTS

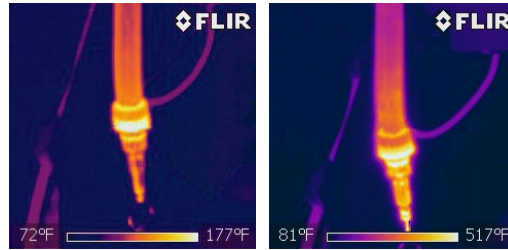
### HIGH PERFORMANCE MIG WELDING GUN



45° and 22° torch necks available

## Introducing the PowerBall<sup>®</sup> Robotic MIG Gun

Wire Wizard<sup>®</sup> Welding Products is proud to introduce a new line of high performance **PowerBall<sup>®</sup> MIG Welding Guns!** Utilizing our patented and proven consumables design, PowerBall<sup>®</sup> MIG guns are engineered to provide maximum conductivity with increased consumable life. The following tests not only show the PowerBall<sup>®</sup> robotic gun **stays cooler** than a leading competitor, but also had **less spatter adhesion** due to the reduced heat build-up.



PowerBall<sup>®</sup>: 177° F Max Temp (80.5° C)

Competitor: 517° F Max Temp (269° C)

#### Better Conductivity = Less Heat Build-up

The PowerBall<sup>®</sup> Torch was **65% cooler** than a leading competitor after running the same workload. FLIR<sup>®</sup> photos taken after 10 welds @ 40 seconds per weld, 230 amps.

The chart below and on page 2 shows the temperature comparison after reaching maximum duty cycle.

#### Full Duty Cycle Test: 350 Amp Temp Comparison

PowerBall<sup>®</sup> contact tip is **20% cooler** than the competitor A

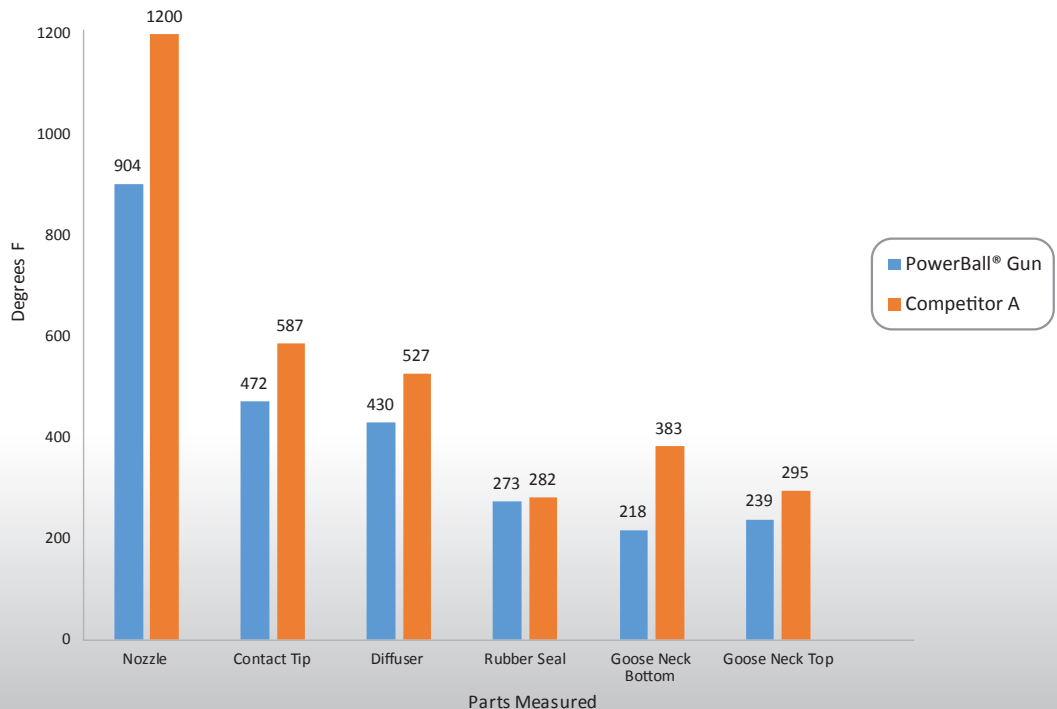
PowerBall<sup>®</sup> diffuser is **18% cooler** than the competitor A

PowerBall<sup>®</sup> bottom goose neck is **43% cooler** than the competitor's

#### Test Parameters:

- Voltage: 38.5 Volts
- Wire Feed Speed: 490 Inches per Minute
- Read Amps: 350 Amps
- Rough CTWD: 0.75" Inches
- Duration of Weld: 1 weld approx. 11 minutes (max duty cycle)\*
- Gas: 35 CFH

\*PowerBall<sup>®</sup> max duty cycle was 116% or 11.6 min., Competitor max duty cycle was 110% or 11 min.



**Full Duty Cycle Test:  
250 Amp Temp Comparison**

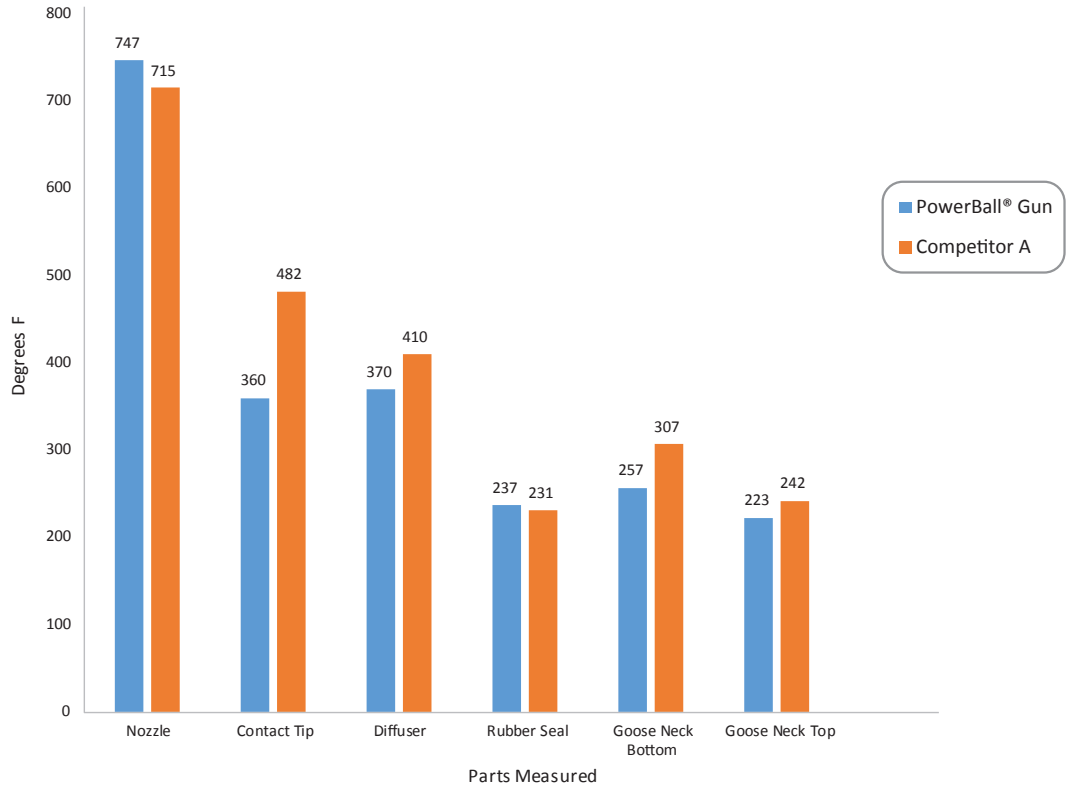
PowerBall® contact tip is **25% cooler** than the competitor A

PowerBall® diffuser is **10% cooler** than the competitor A

**Test Parameters:**

Voltage: 32.3 Volts  
Wire Feed Speed: 360 Inches per Minute  
Read Amps: 250 Amps  
Rough CTWD: 0.75" Inches  
Duration of Weld: 1 weld approx. 12-13 minutes (max duty cycle)\*  
Gas: 35 CFH

\*PowerBall® max duty cycle was **135%** or 13.5 min.,  
Competitor max duty cycle was **125%** or 12.5 min.

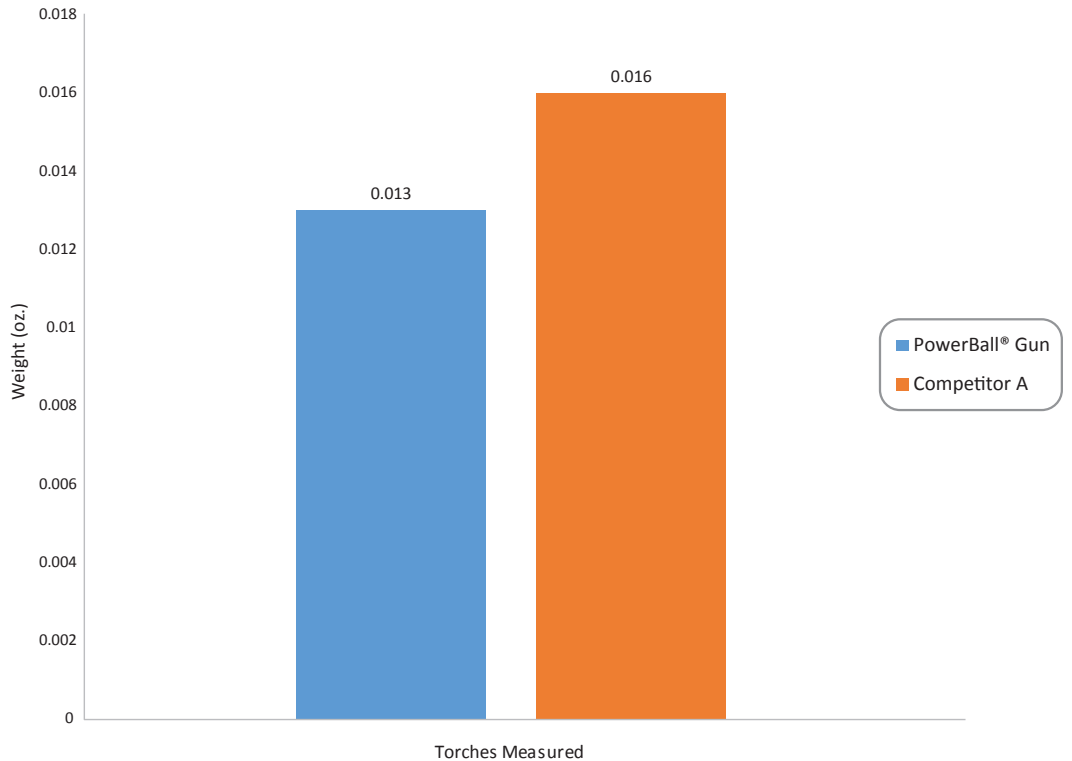


**3 Minute Spatter Adhesion  
Comparison @ 250 Amps**

PowerBall® torch has **19% less** spatter adhesion than Competitor A

**Test Parameters:**

Voltage: 32.3 Volts  
Wire Feed Speed: 360 Inches per Minute  
Read Amps: 250 Amps  
Run in Speed: 150 Inches per Minute  
Gas: 35 CFH



**SIGN UP FOR A TRIAL & SEE THE POWERBALL DIFFERENCE!**